



Overhof

Hoepertingen

INHOUD

moderne woningen

	grondoppervlakte	bruto opp.	pagina
WONING 1	02a 38ca	143.22 m ²	4-5
WONING 2	02a 32ca	143.22 m ²	6-7
WONING 3	02a 32ca	143.22 m ²	8-9
WONING 4	02a 32ca	143.22 m ²	12-13
WONING 5	02a 33ca	143.22 m ²	14-15
WONING 6	02a 96ca	143.22 m ²	18-19

rustieke woningen

	grondoppervlakte	bruto opp.	pagina
WONING 7	08a 11ca	190.75 m ²	22-23
WONING 8	05a 99ca	190.75 m ²	26-27
WONING 9	05a 45ca	190.75 m ²	30-31
WONING 10	07a 45ca	190.75 m ²	32-33
WONING 11	07a 32ca	190.75 m ²	36-37





1:100

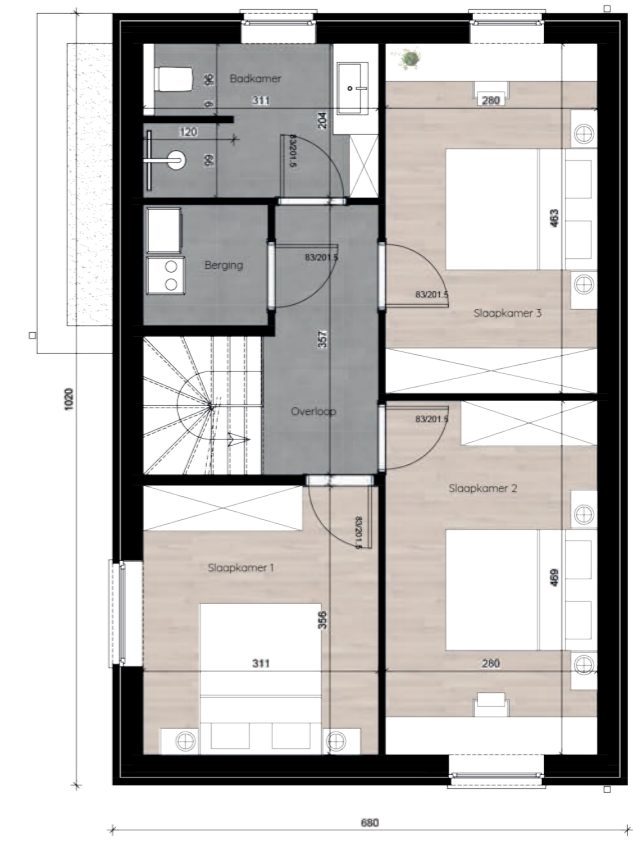
WONING 1

- grondopp. : 02a 38ca

- bruto opp. : 143.22 m²



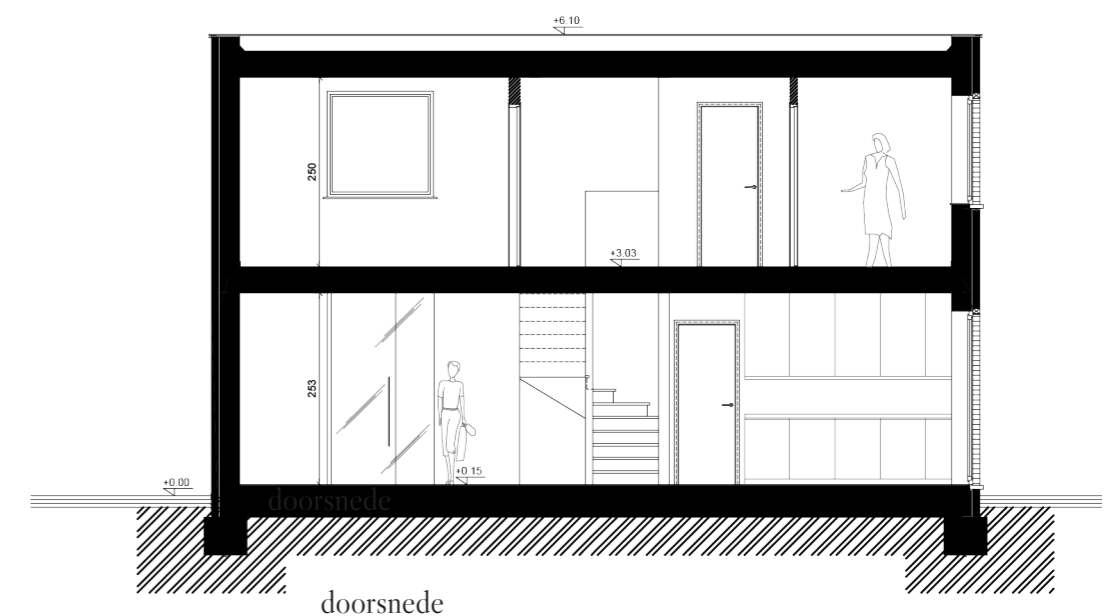
gelijkvloers



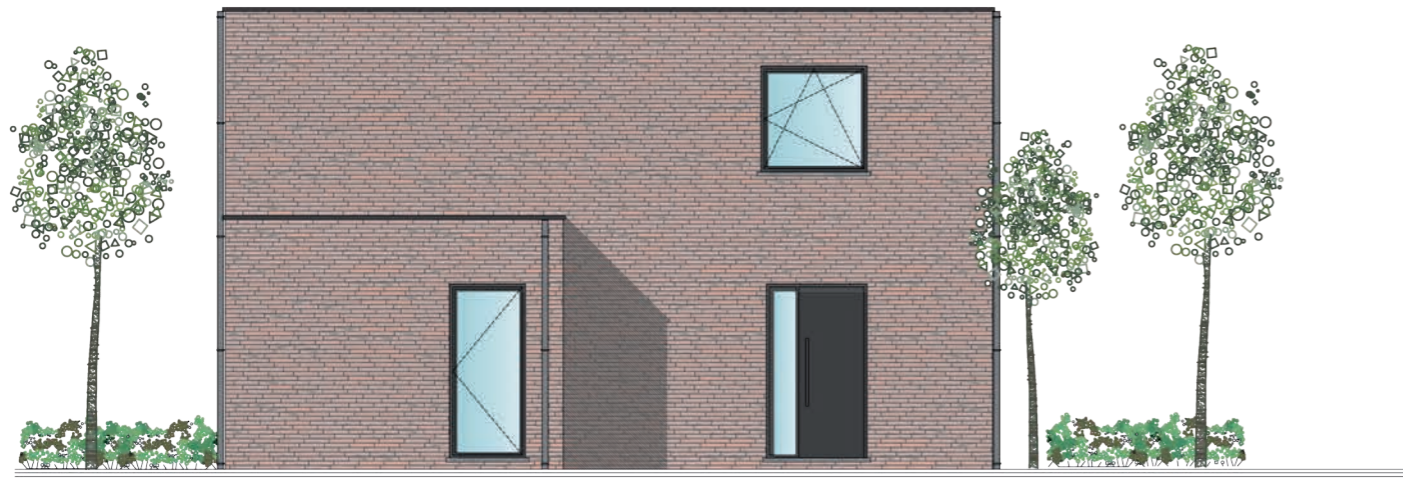
verdieping



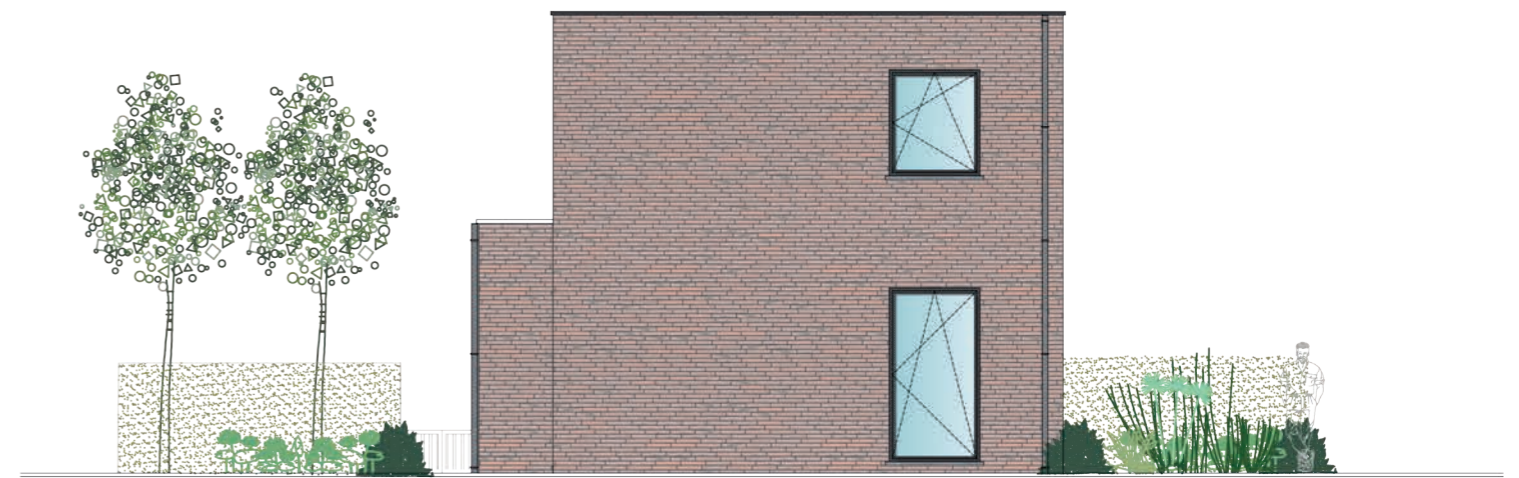
inplanting



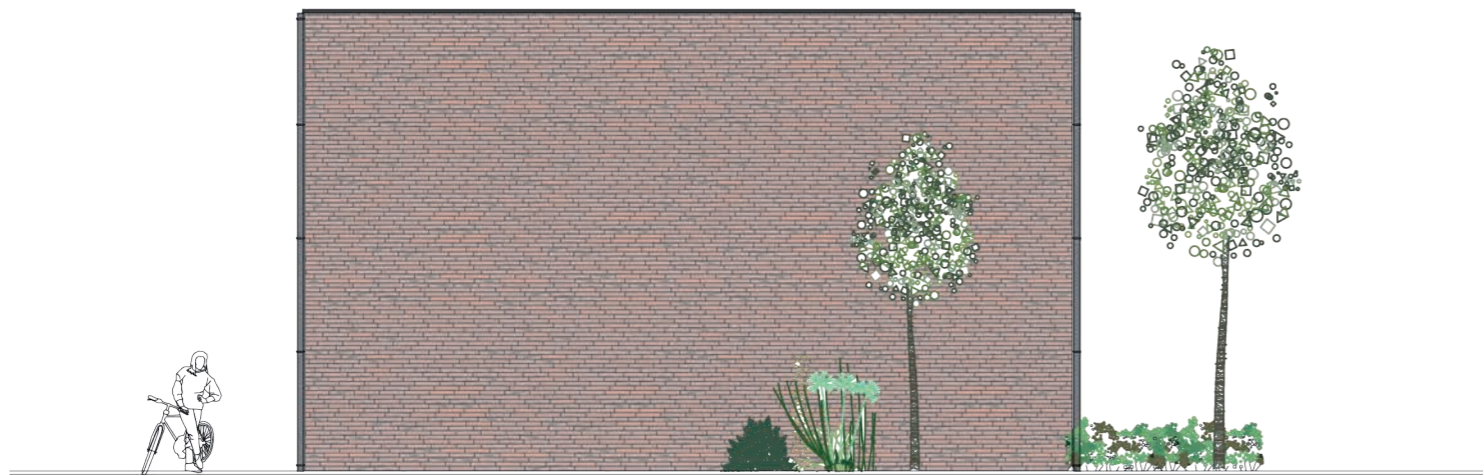
doorsnede



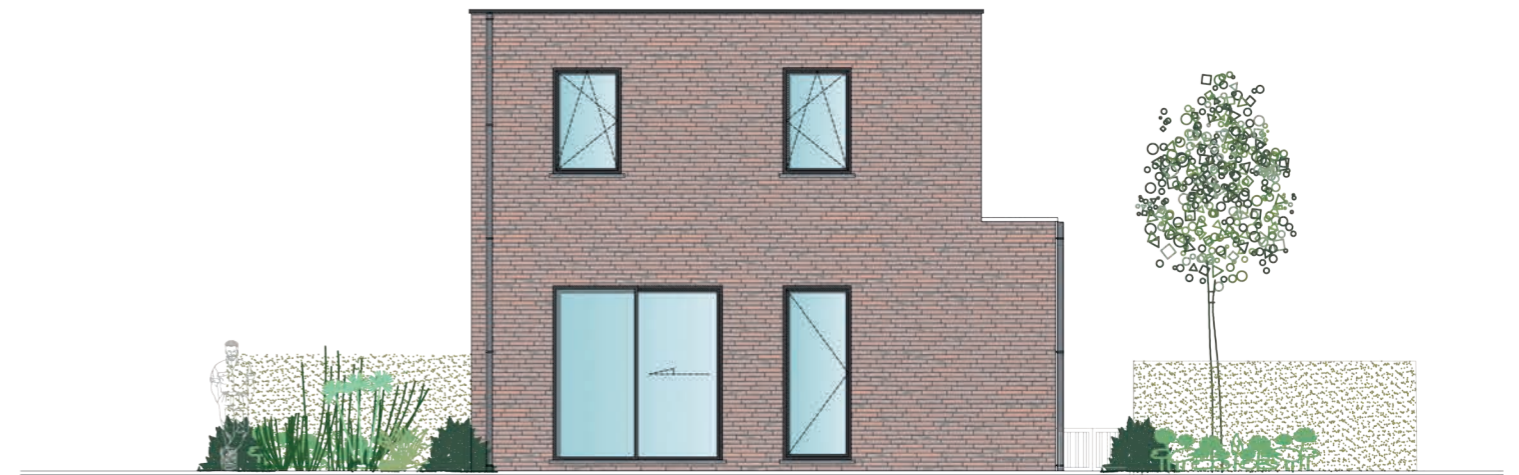
linkerzijgevel



voorgevel



rechterzijgevel



achtergevel

1:100

WONING 2

- grondopp. : 02a 32ca

- bruto opp. : 143.22 m²



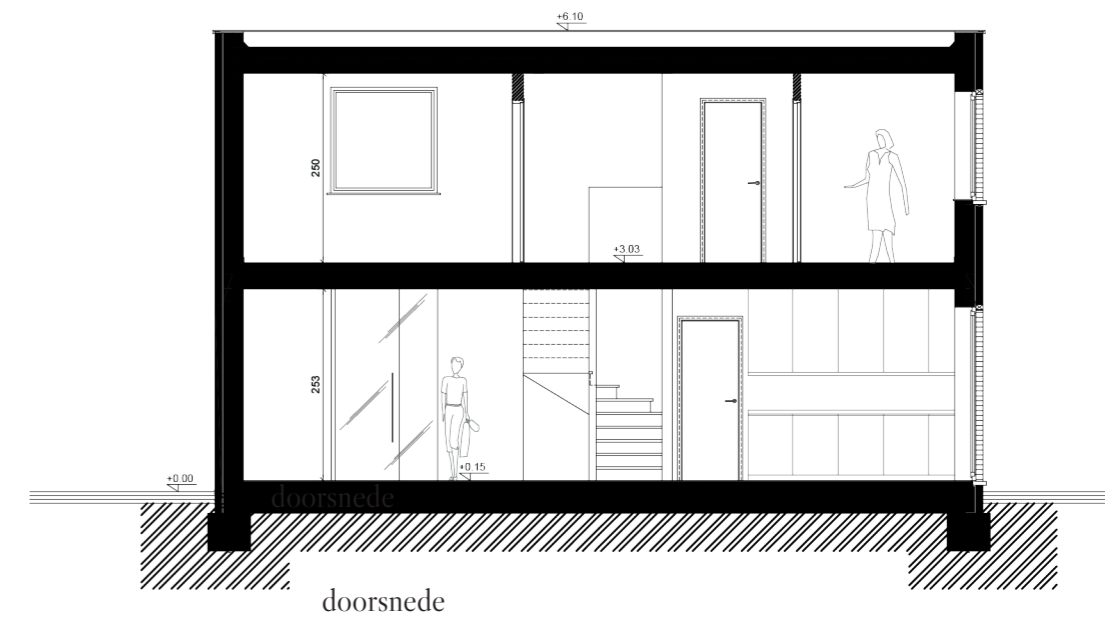
gelijkvloers



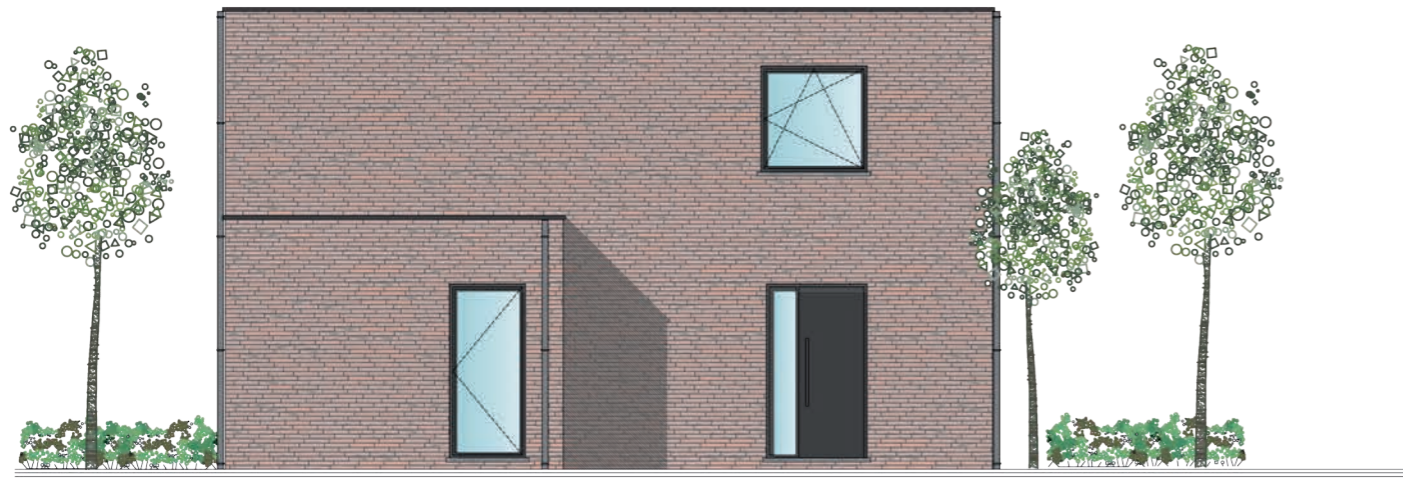
verdieping



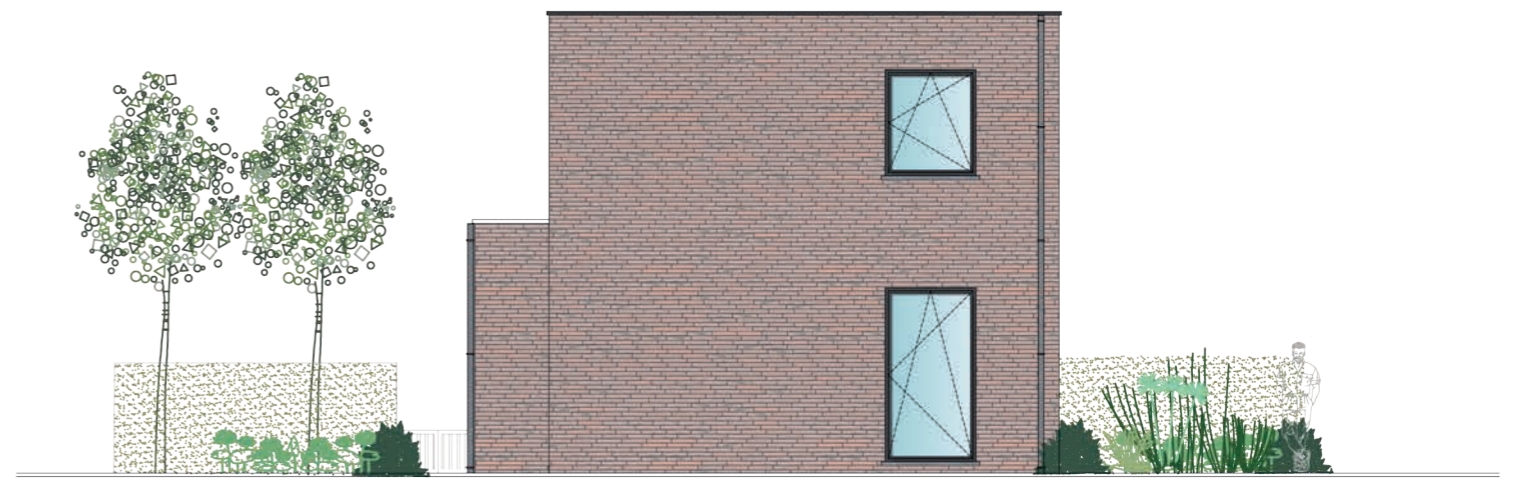
inplanting



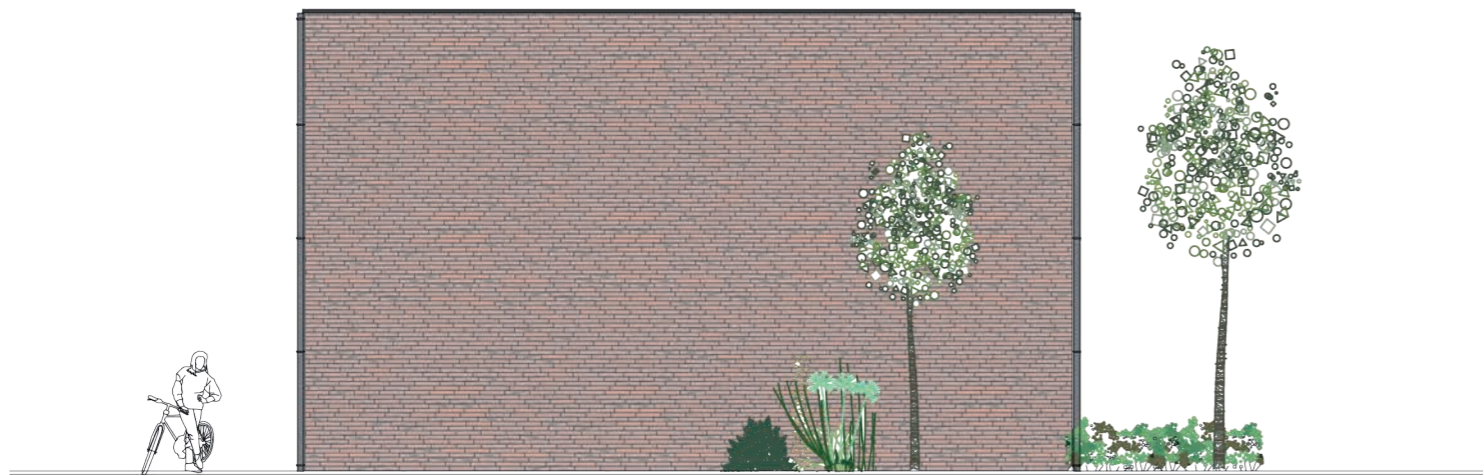
doorsnede



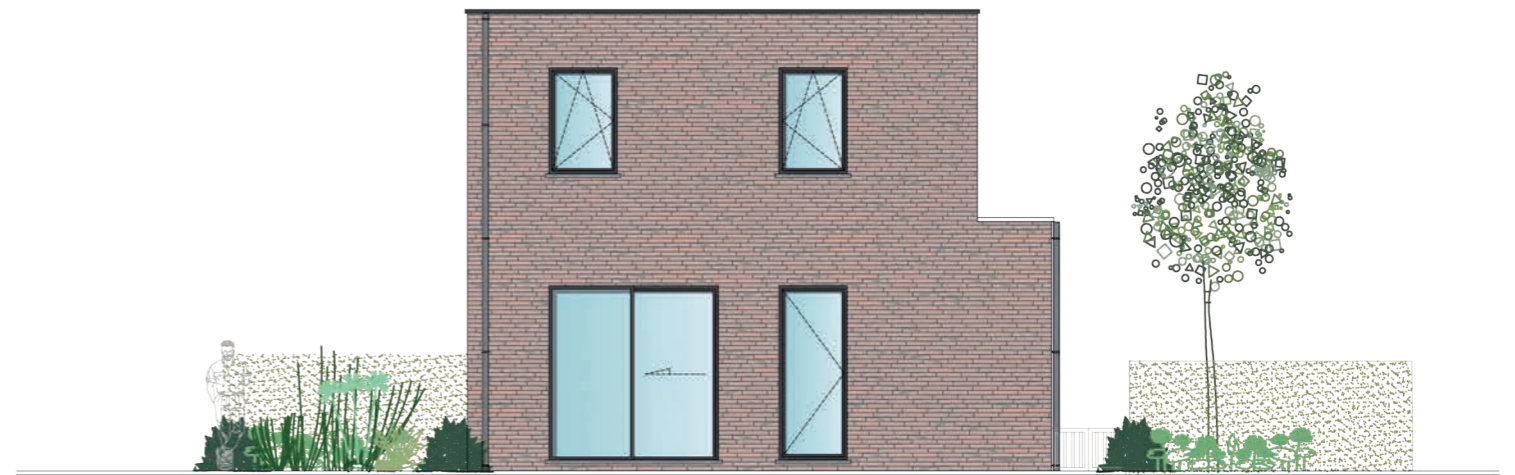
linkerzijgevel



voorgevel



rechterzijgevel



achtergevel

1:100

WONING 3

- grondopp. : 02a 32ca

- bruto opp. : 143.22 m²



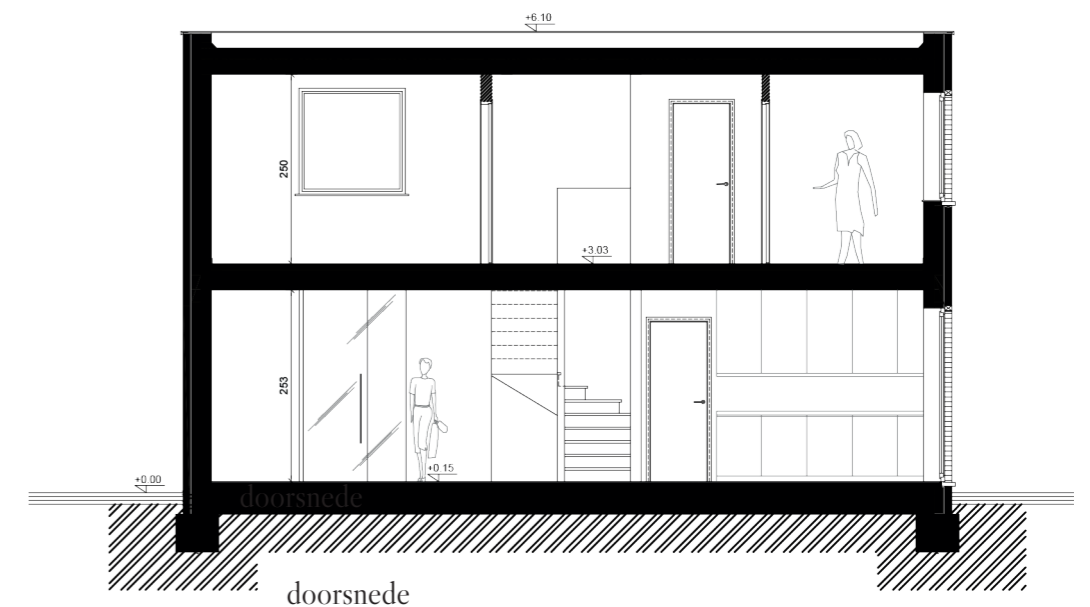
gelijkvloers



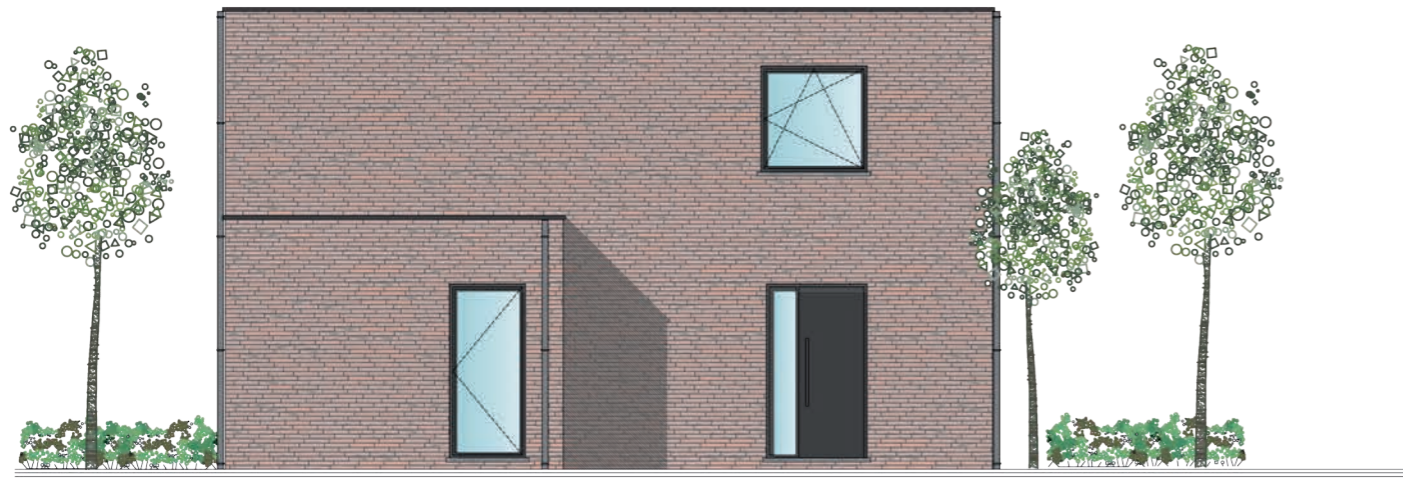
verdieping



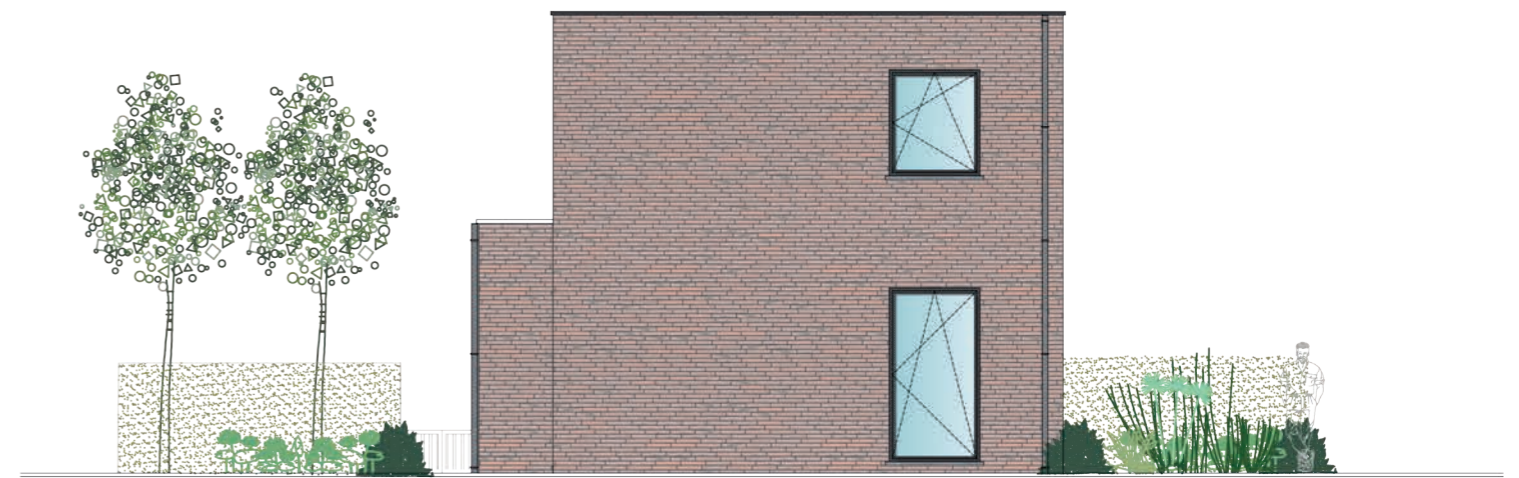
inplanting



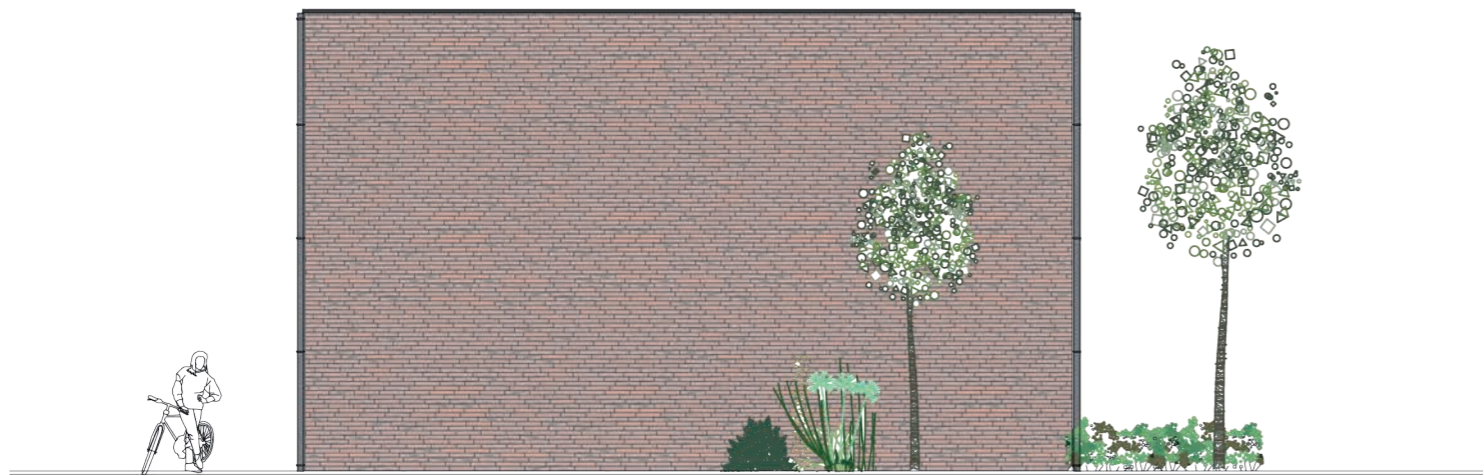
doorsnede



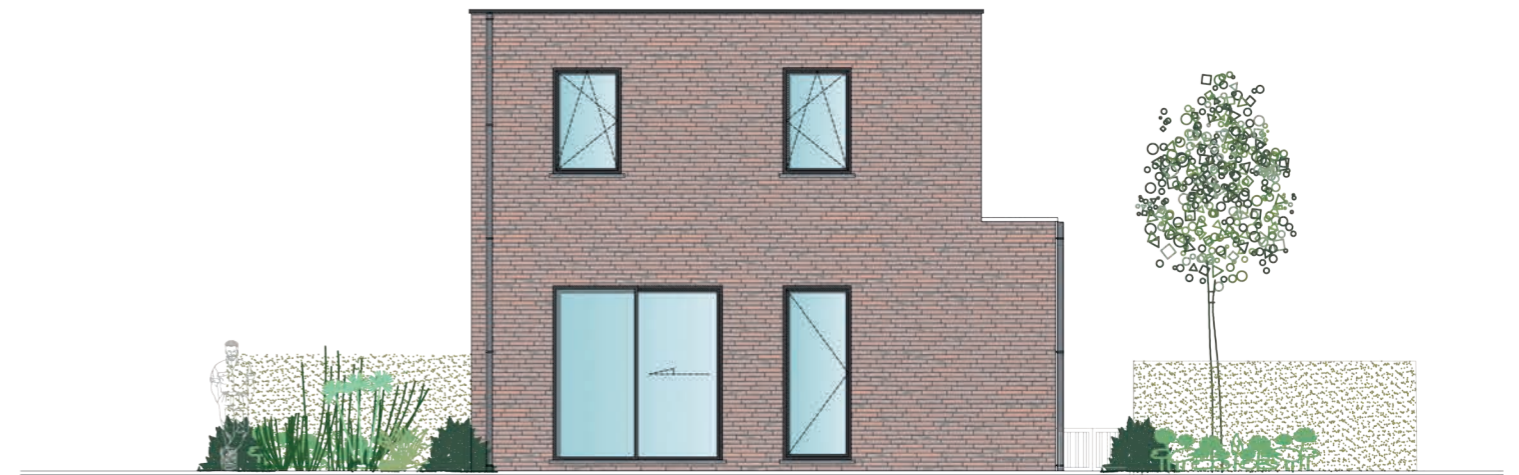
linkerzijgevel



voorgevel



rechterzijgevel



achtergevel





1:100

WONING 4

- grondopp. : 02a 32ca

- bruto opp. : 143.22 m²



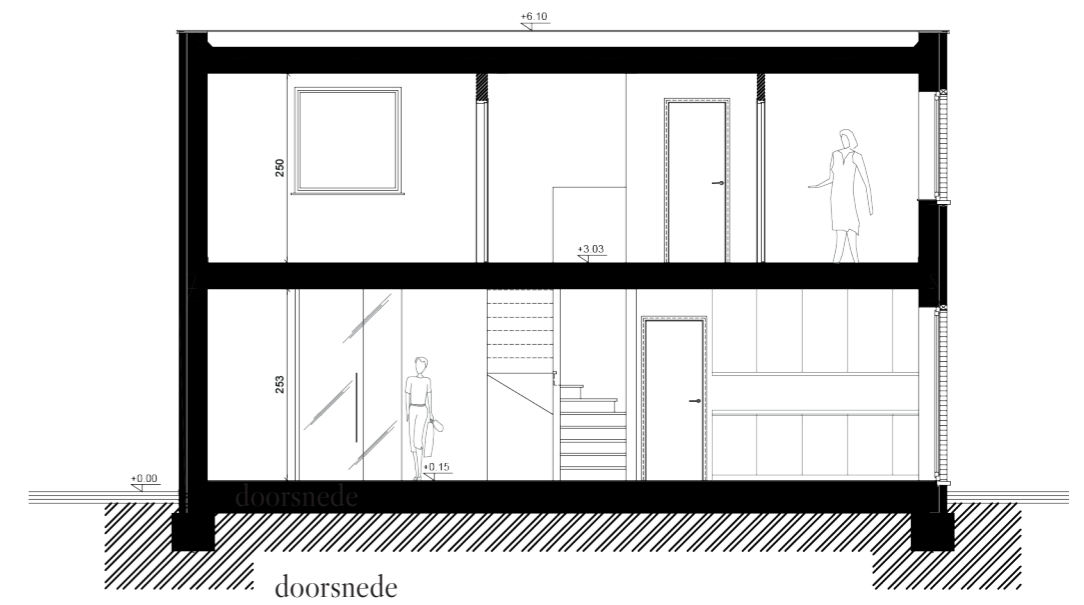
gelijkvloers



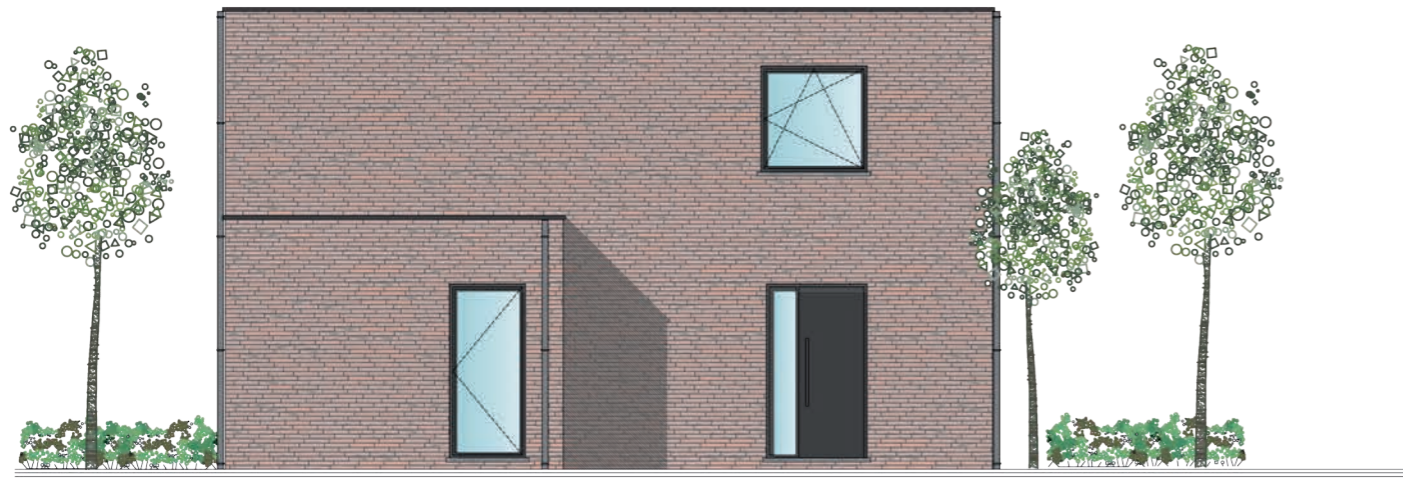
verdieping



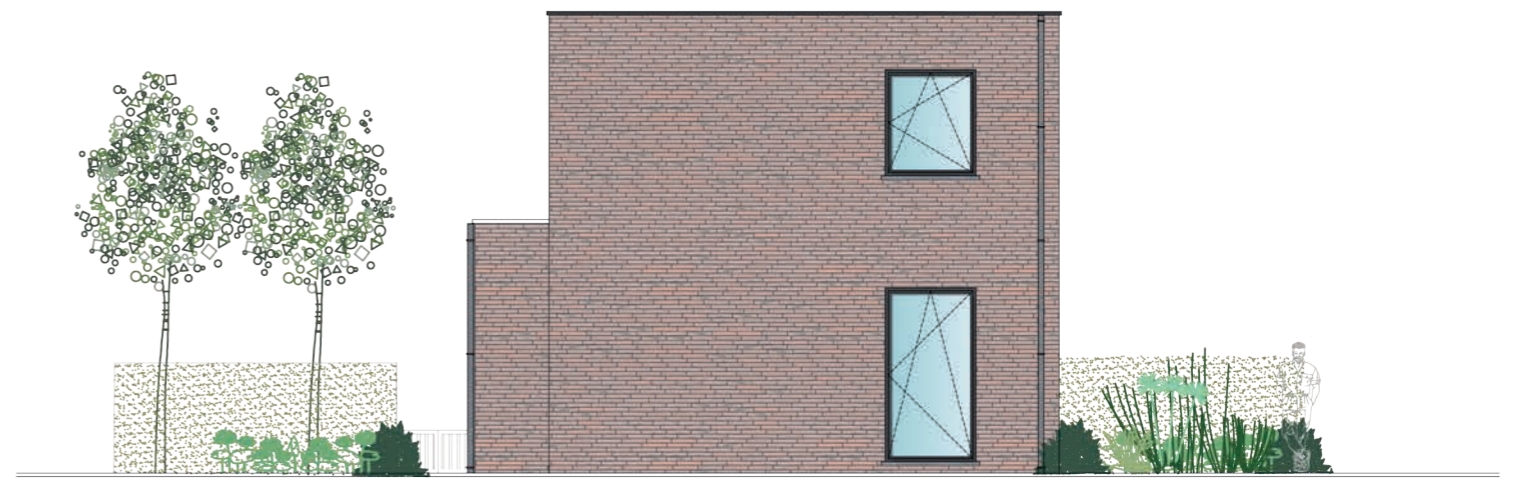
inplanting



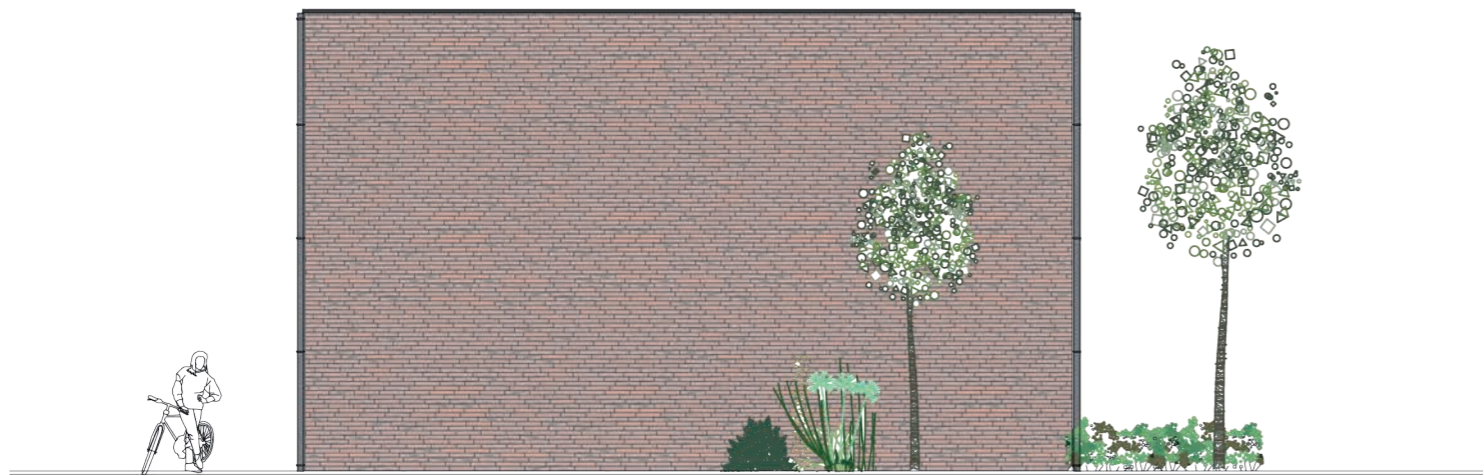
doorsnede



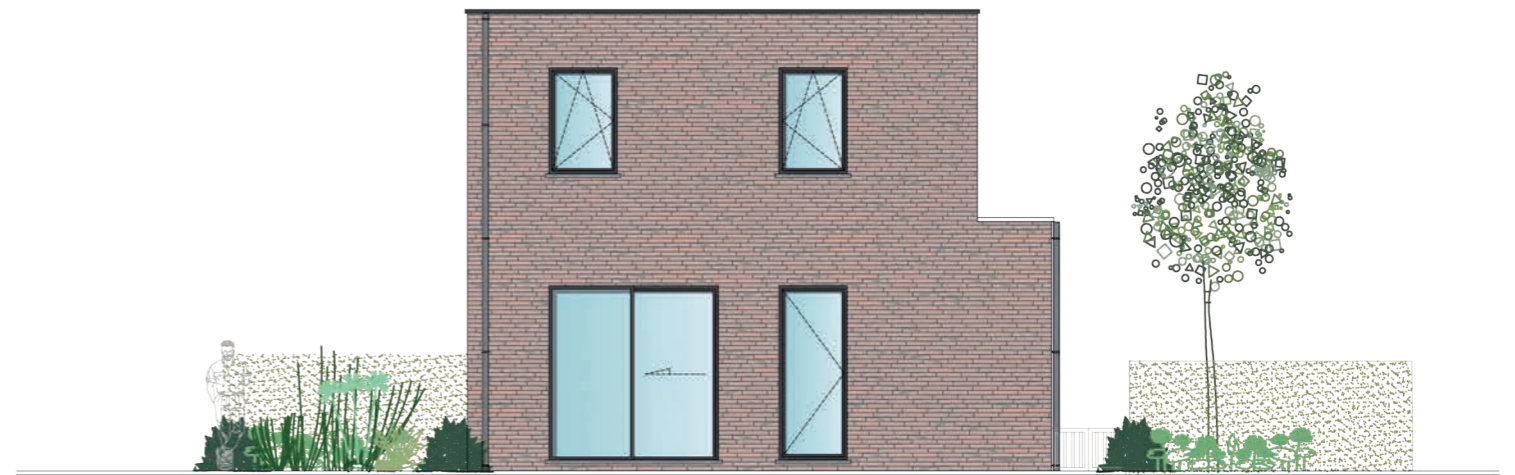
linkerzijgevel



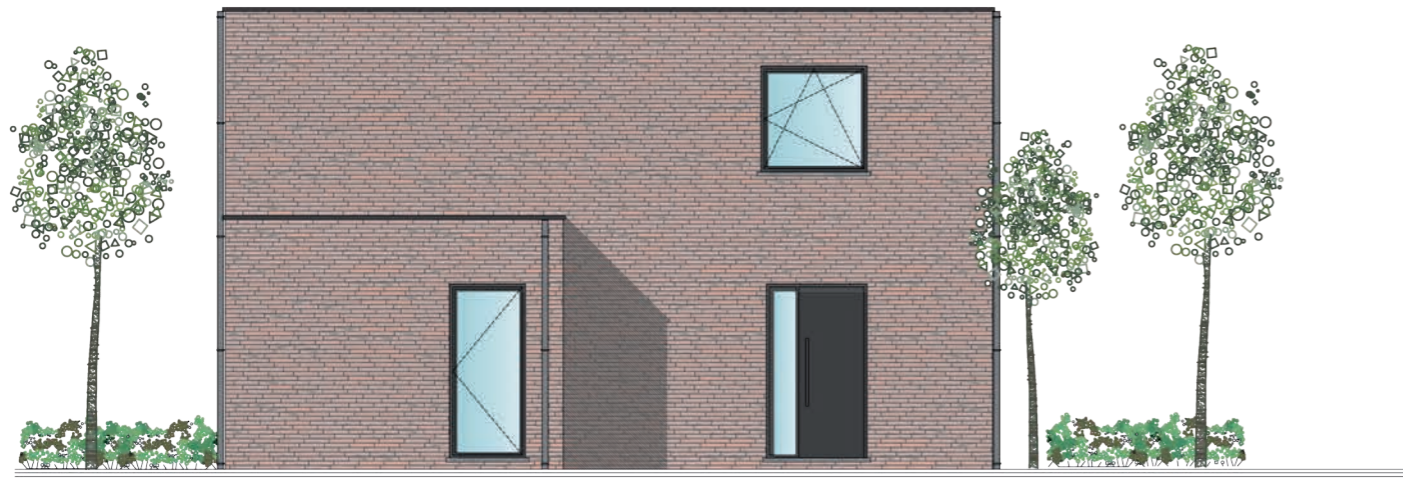
voorgevel



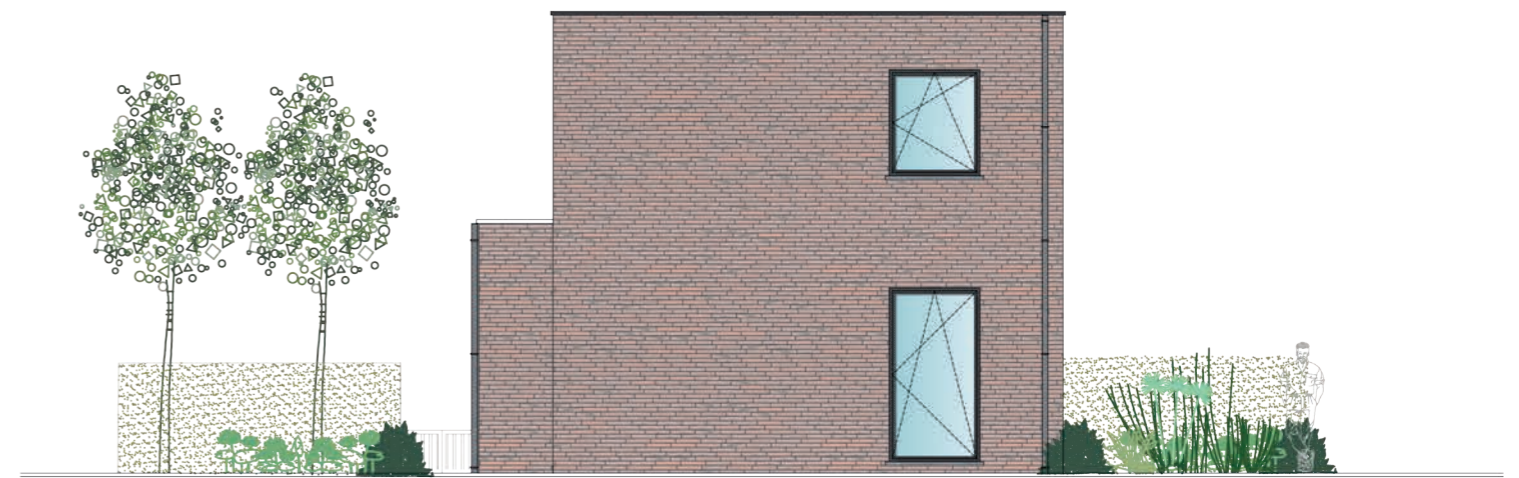
rechterzijgevel



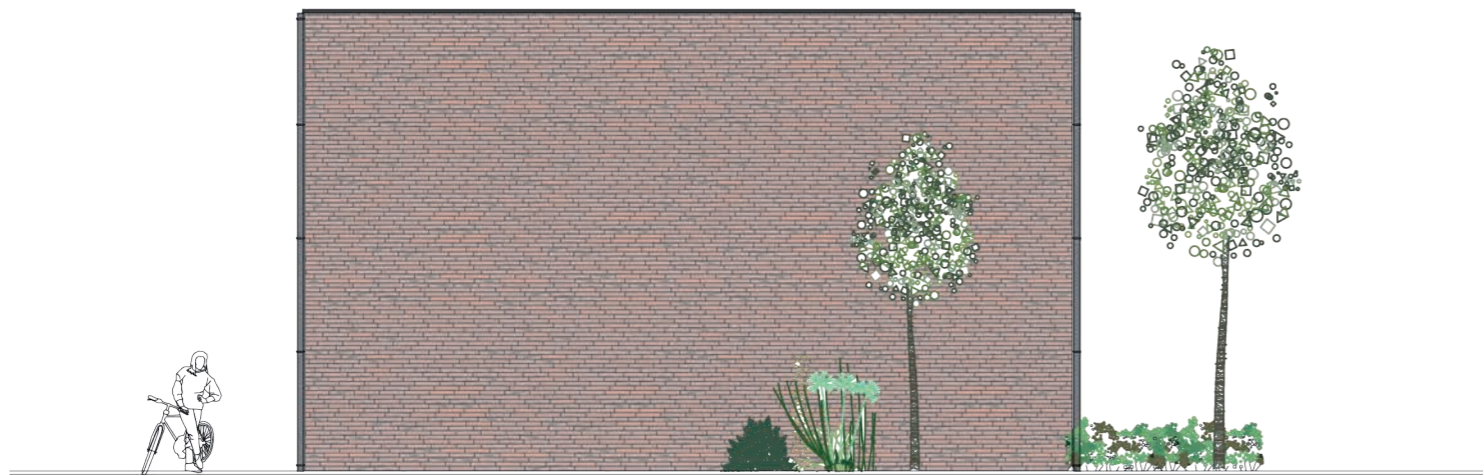
achtergevel



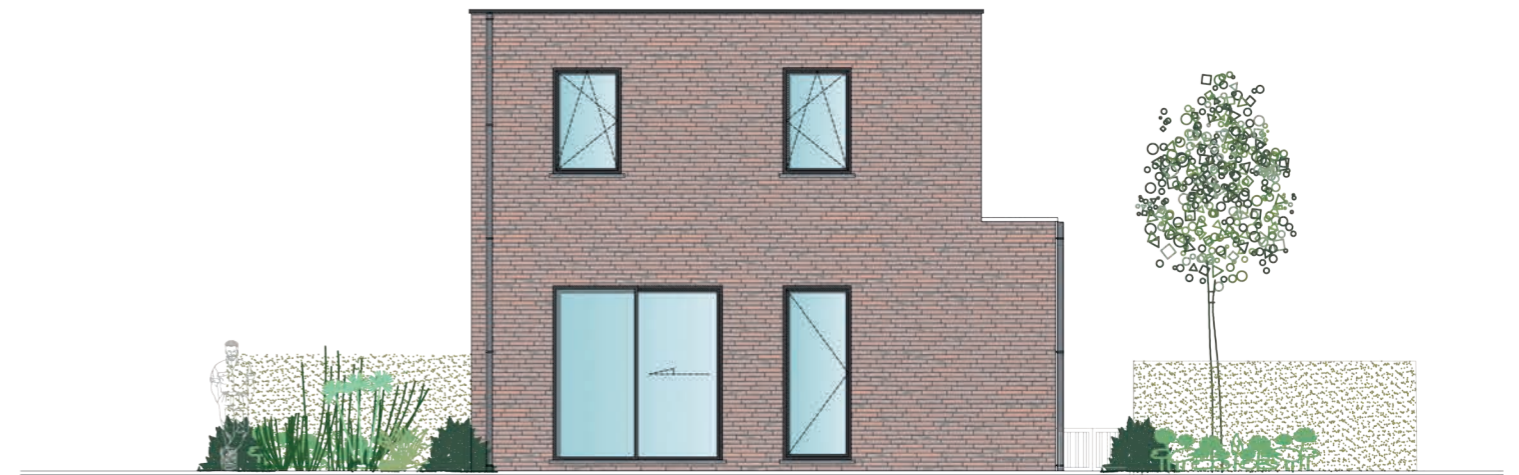
linkerzijgevel



voorgevel



rechterzijgevel



achtergevel





1:100

WONING 6

- grondopp. : 02a 96ca

- bruto opp. : 143.22 m²



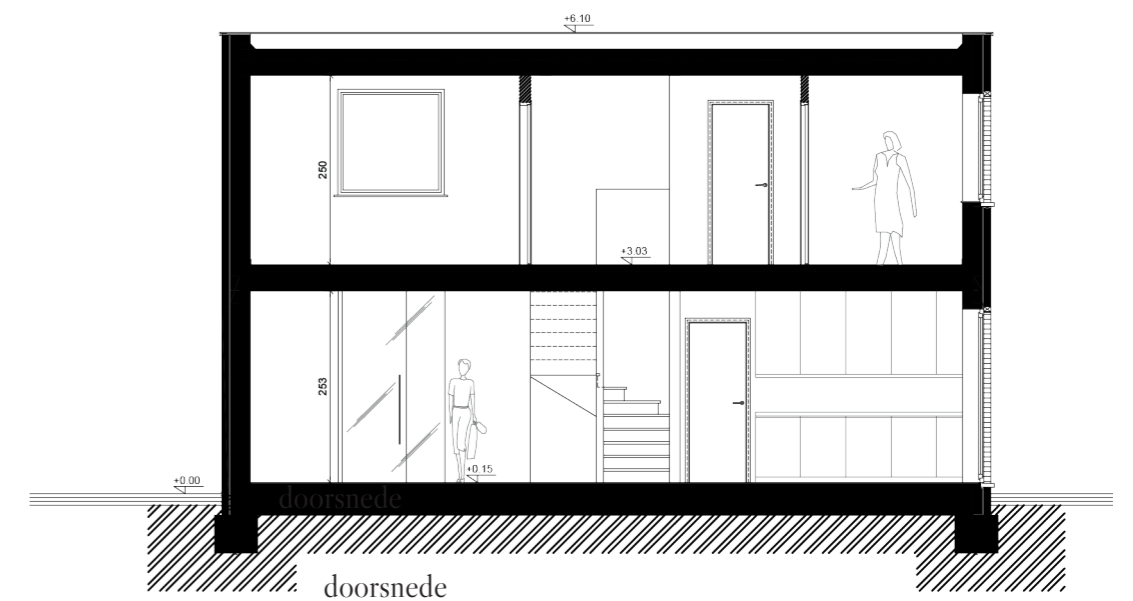
gelijkvloers



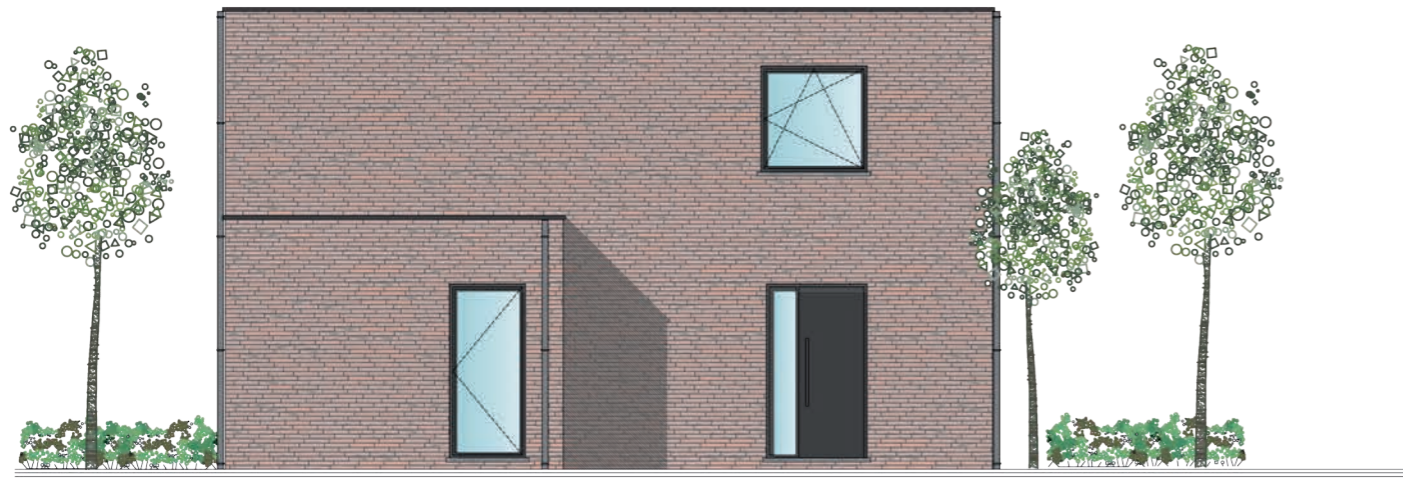
verdieping



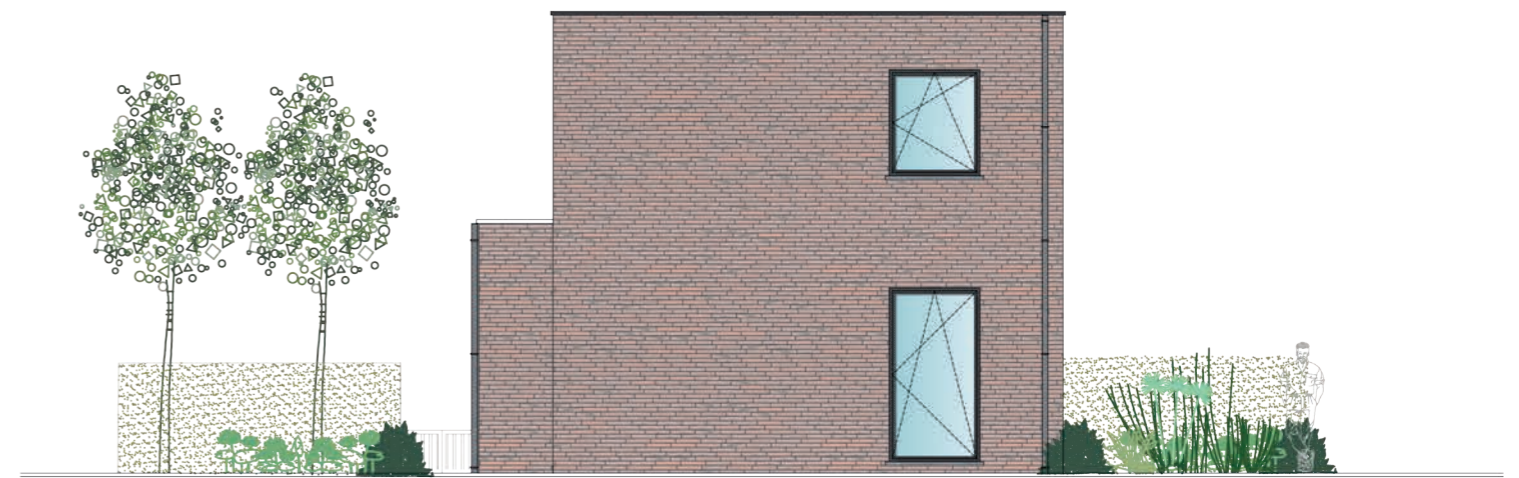
inplanting



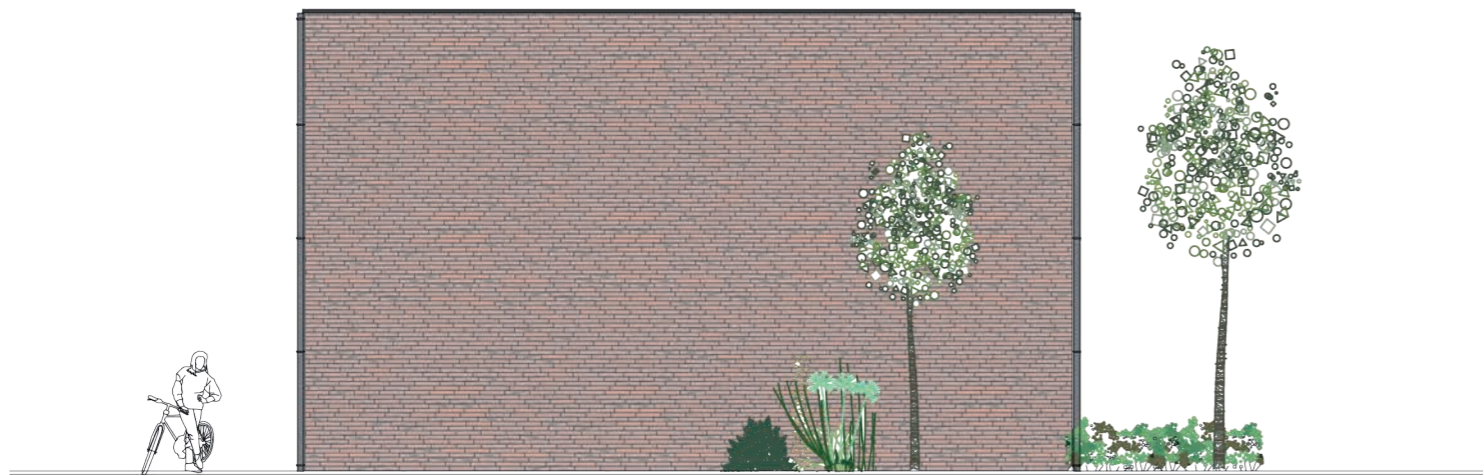
doorsnede



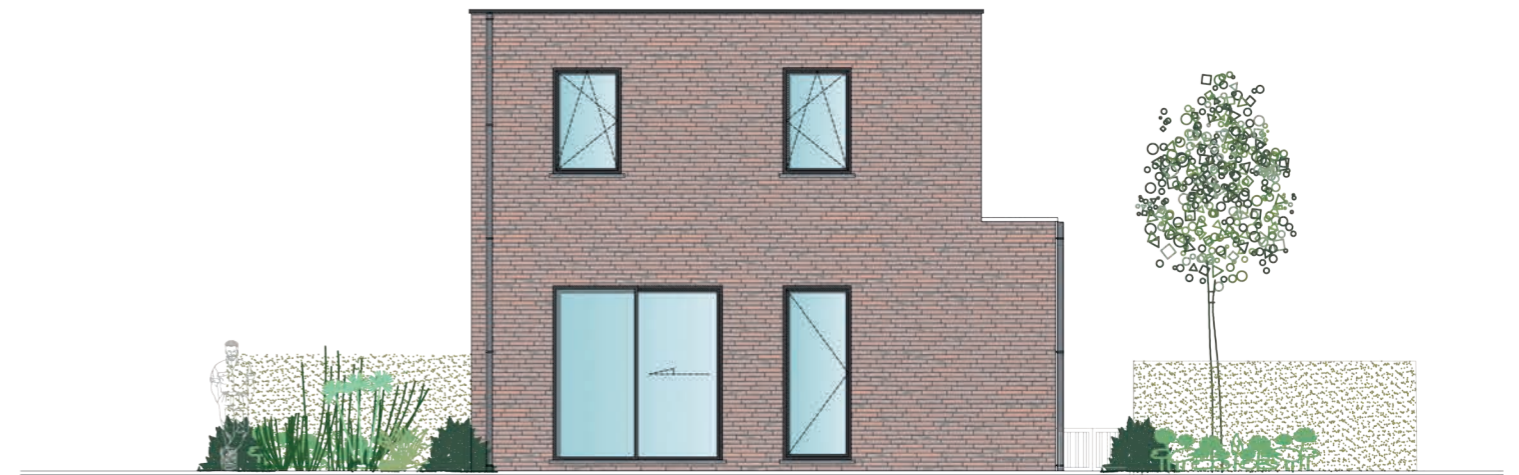
linkerzijgevel



voorgevel



rechterzijgevel



achtergevel







voorgevel



achtergevel



linkerzijgevel



rechterzijgevel



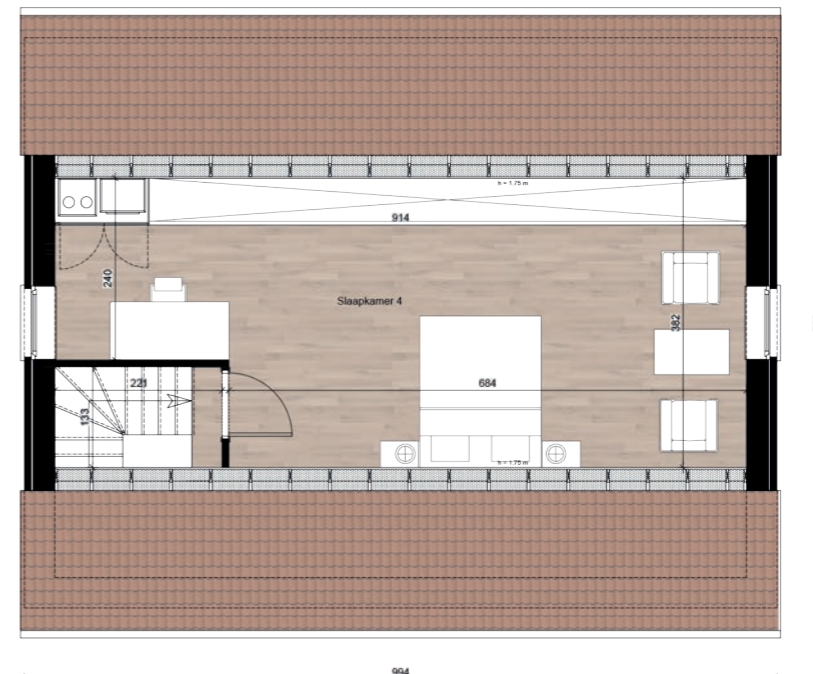




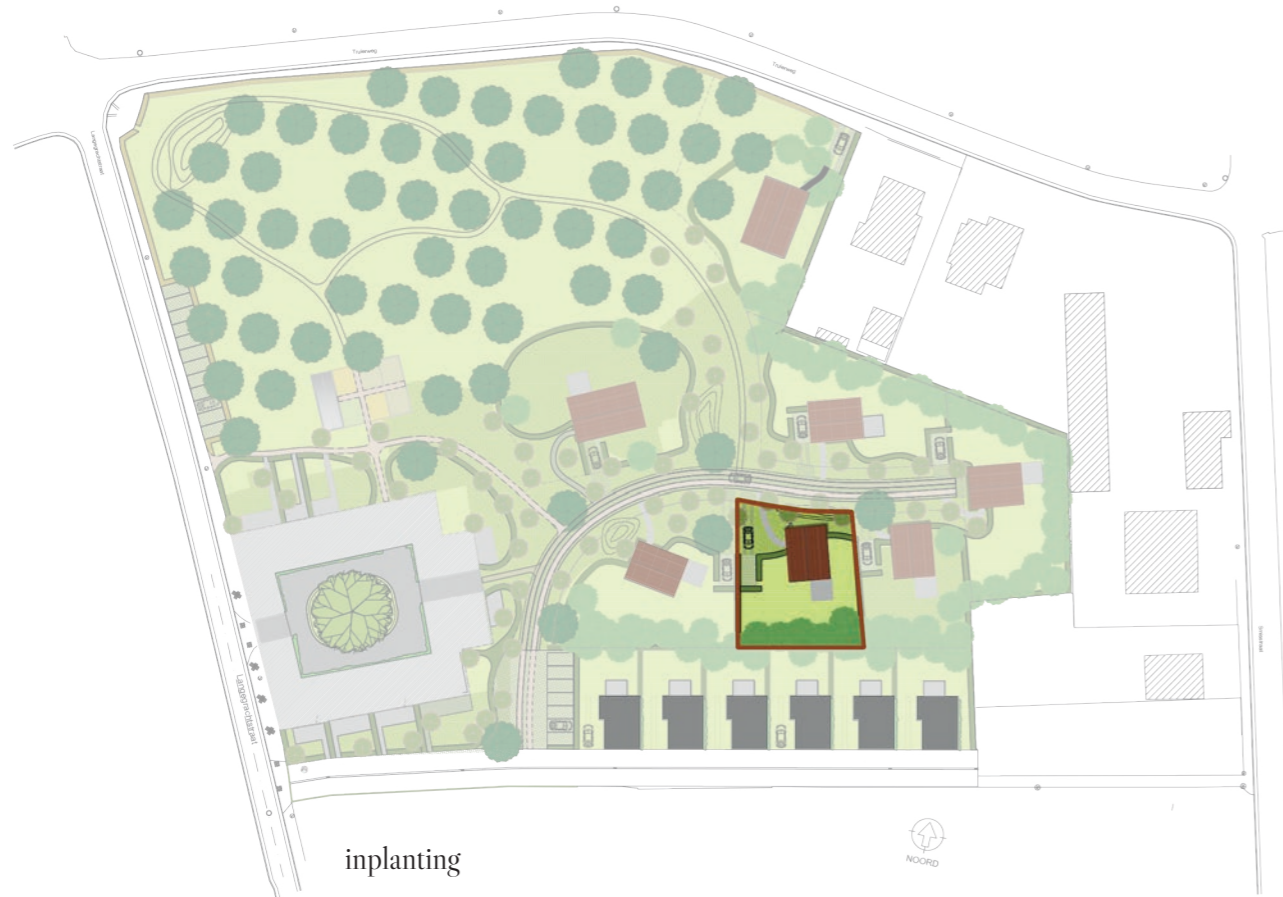
gelijkvloers



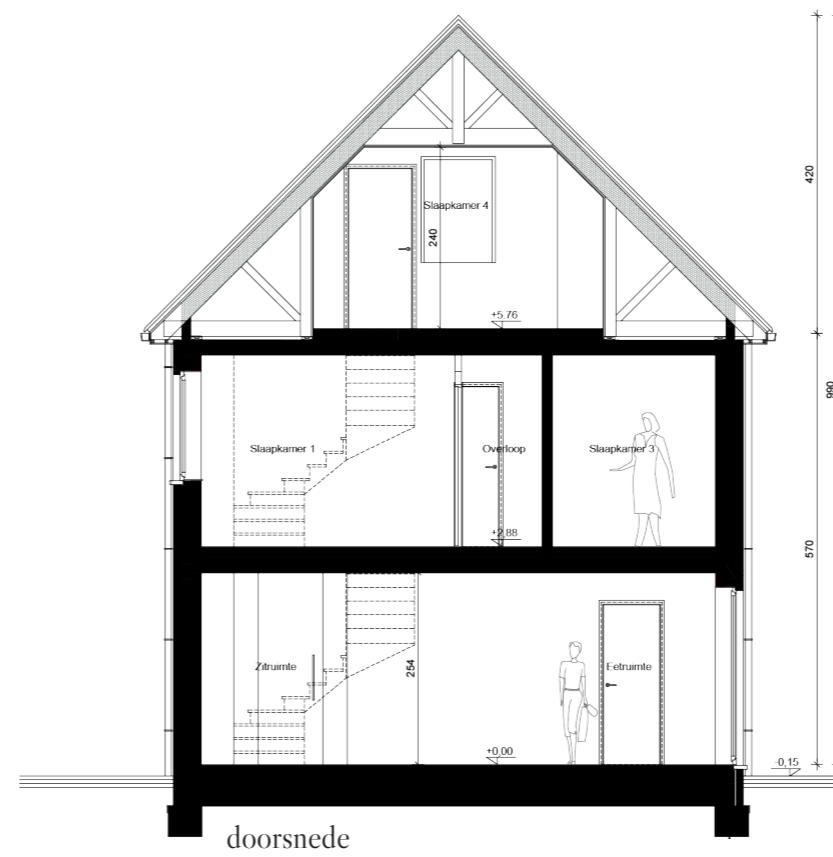
verdieping



zolder



inplanting



doorsnede

1:100

WONING 8

- grondopp. : 05a 99ca

- bruto opp. : 190.75 m²



voorgevel



achtergevel



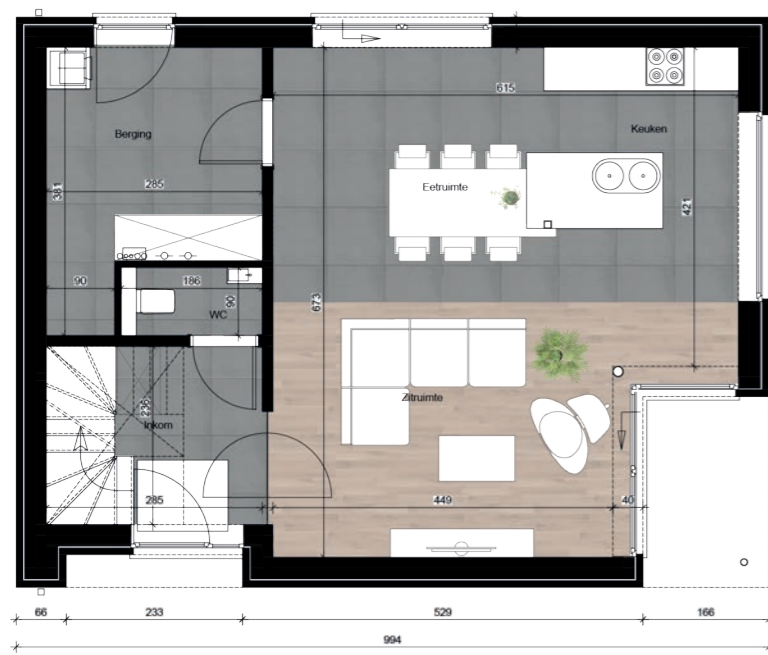
rechterzijgevel



linkerzijgevel



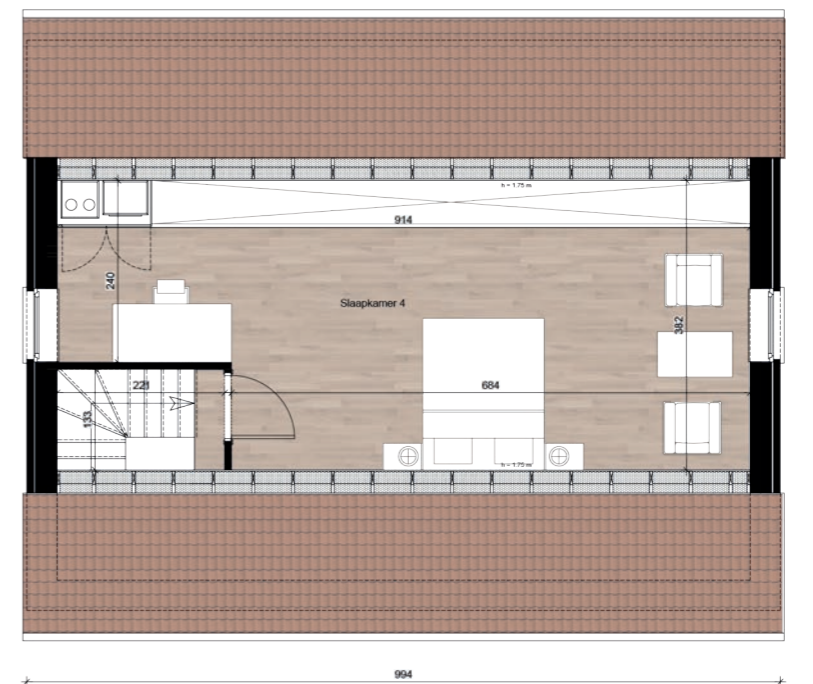




gelijkvloers



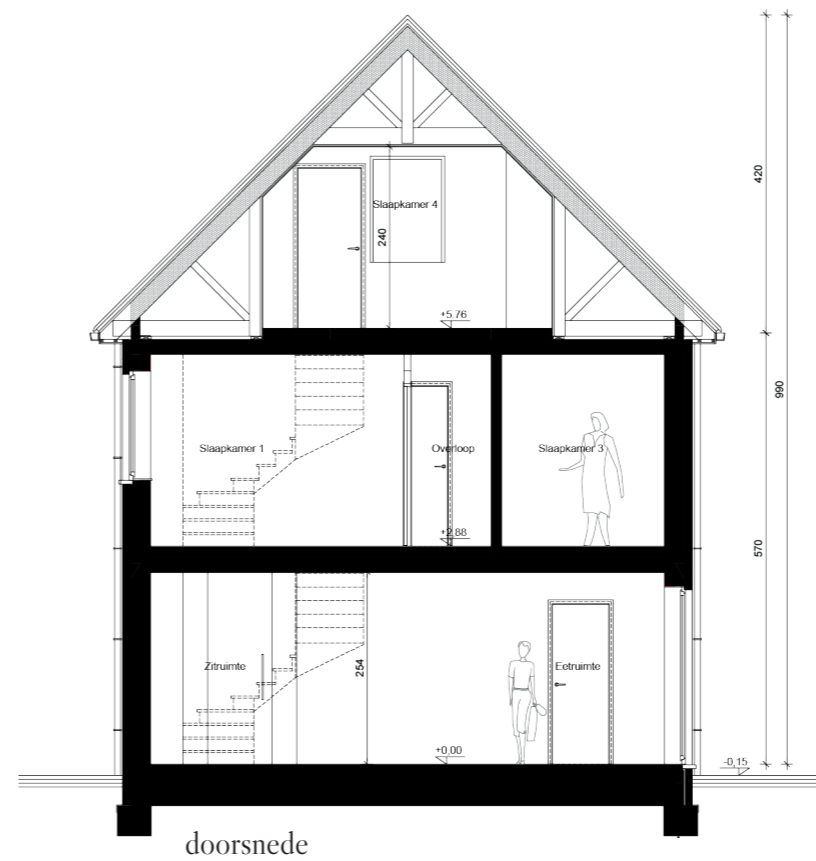
verdieping



zolder



inplanting



doorsnede

1:100

WONING 9

- grondopp. : 05a 45ca
- bruto opp. : 190.75 m²



voorgevel



achtergevel



rechterzijgevel



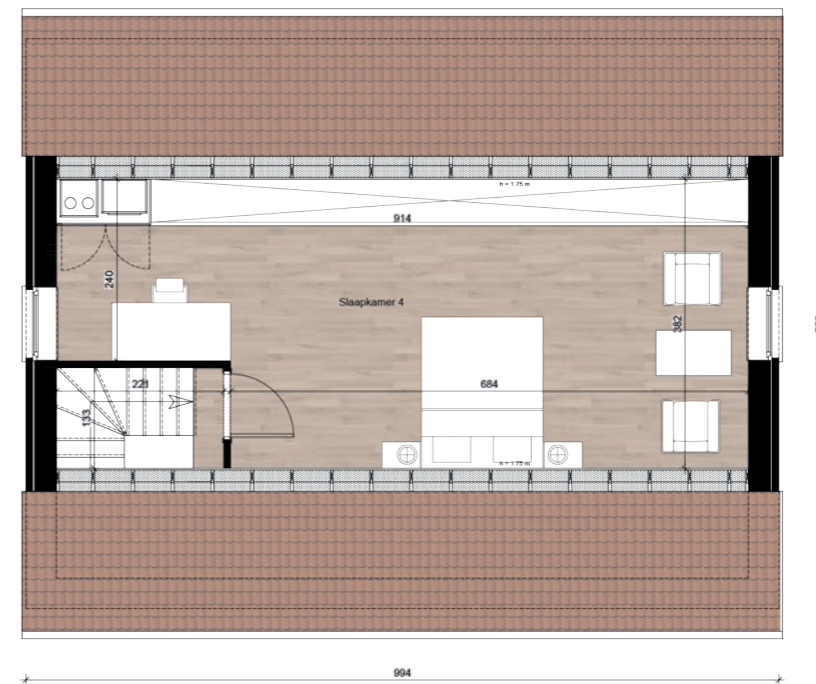
linkerzijgevel



gelijkvloers



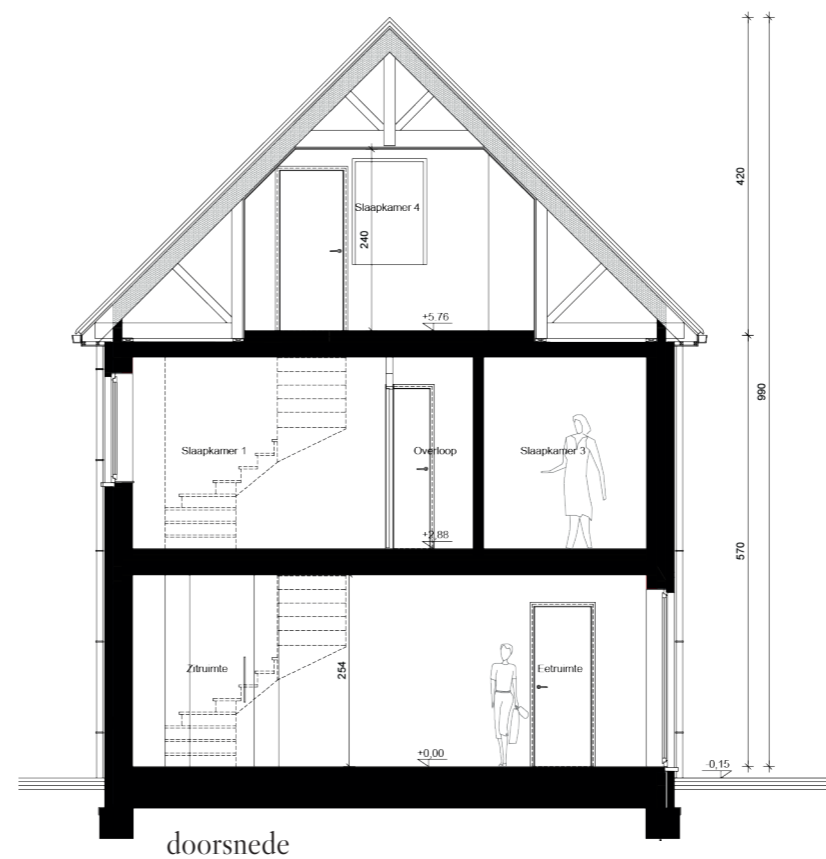
verdieping



zolder



inplanting



doorsnede

1:100

WONING 10

- grondopp. : 07a 45ca

- bruto opp. : 190.75 m²



voorgevel



achtergevel



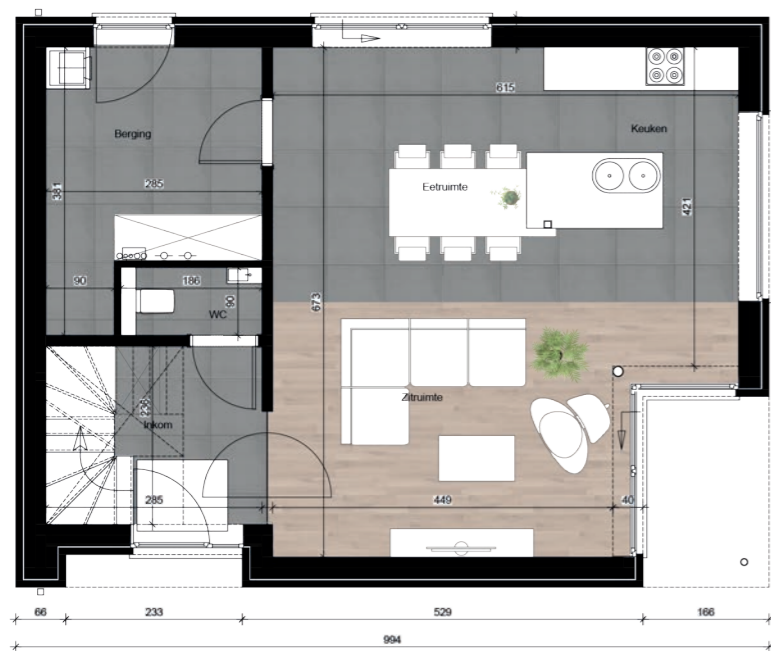
rechterzijgevel



linkerzijgevel



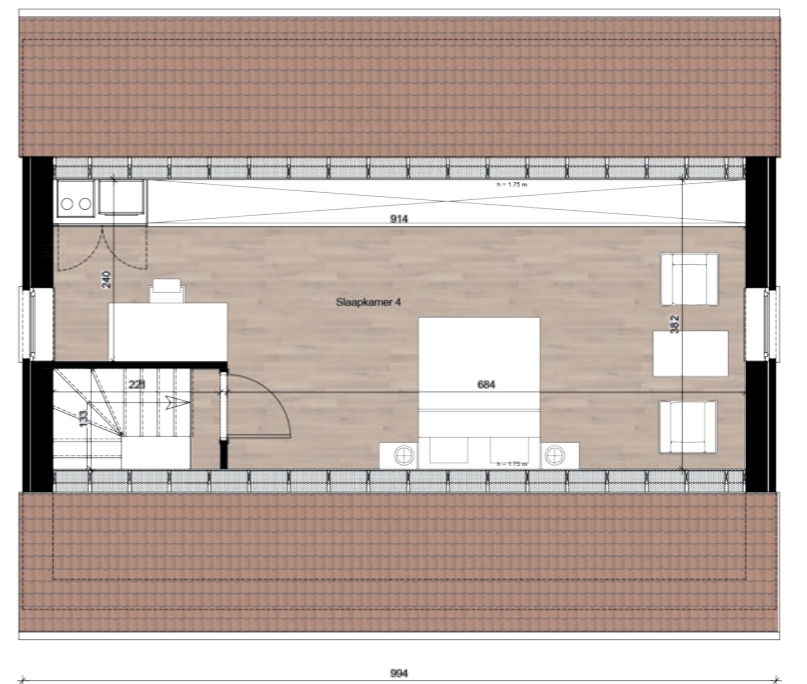




gelijkvloers



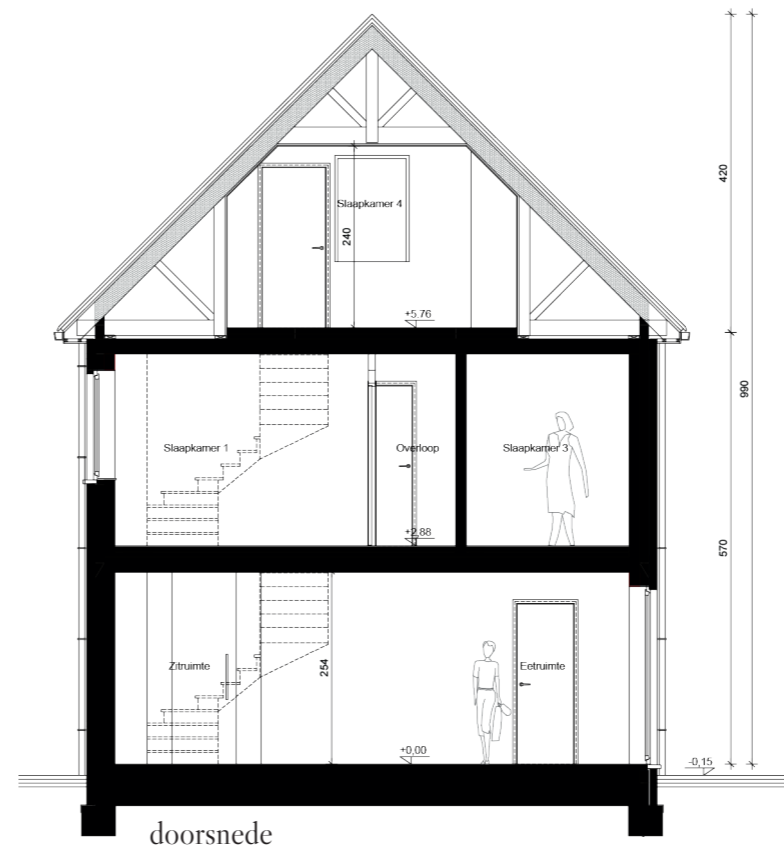
verdieping



zolder



inplanting



doorsnede

1:100

WONING 11

- grondopp. : 07a 32ca

- bruto opp. : 190.75 m²



voorgevel



achtergevel



rechterzijgevel



linkerzijgevel



Overhof

Hoepertingen



GILLEN woonprojecten

011/74.88.90 — 0499/38.78.81

info@gilen-woonprojecten.be



DFM architectural office
www.dfmoffice.be